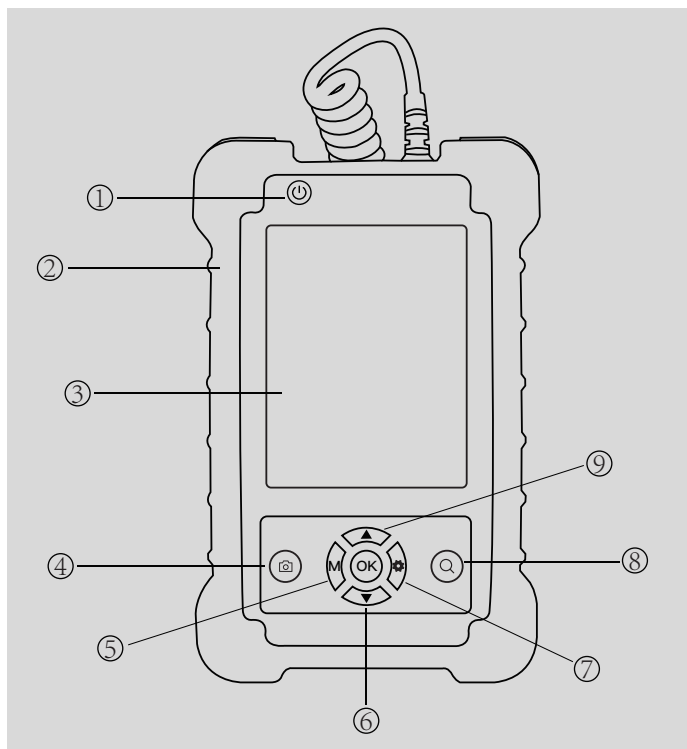


TIP-600V fiber inspection probe instruction manual

1 Description of external and function keys

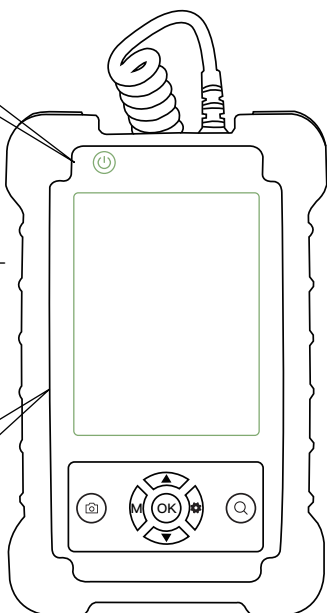
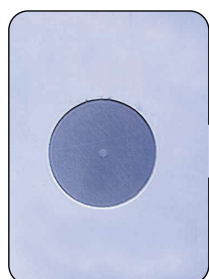


- ① Switch: Turn the device on or off
- ② Silicone case: shock-proof, drop-proof, dust-proof
- ③ Display: display the cleaning state of the end face
- ④ Record key: record measurement information, support information playback.
- ⑤ M key: select different modes for testing.
- ⑥ ▽key: Switch to the next page ⑦ Setting key
- ⑧ Zoom in and out ⑨ △key: Switch to previous page

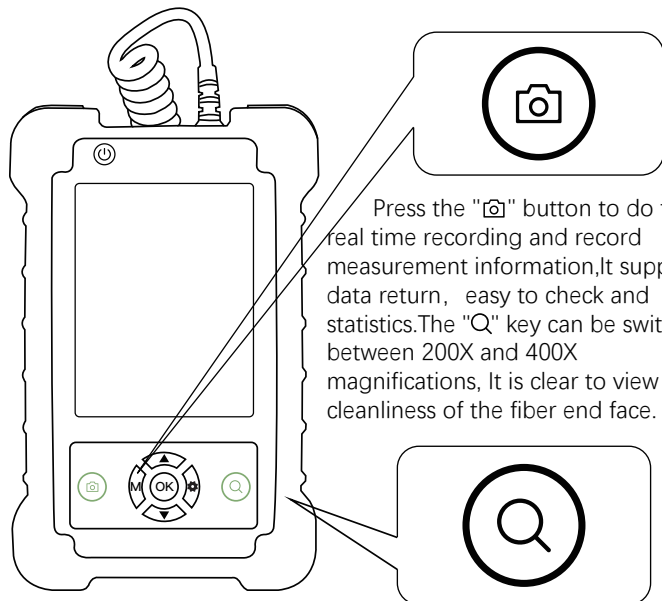
2 Switch machine and LCD display



Long press the "⏻" key for more than two seconds, the meter will be turn on. Press this key for more than two seconds again to turn off the instrument. Using 3.5-inch high-definition LCD display to further improve the display brightness and clarity, there by avoiding visual fatigue.

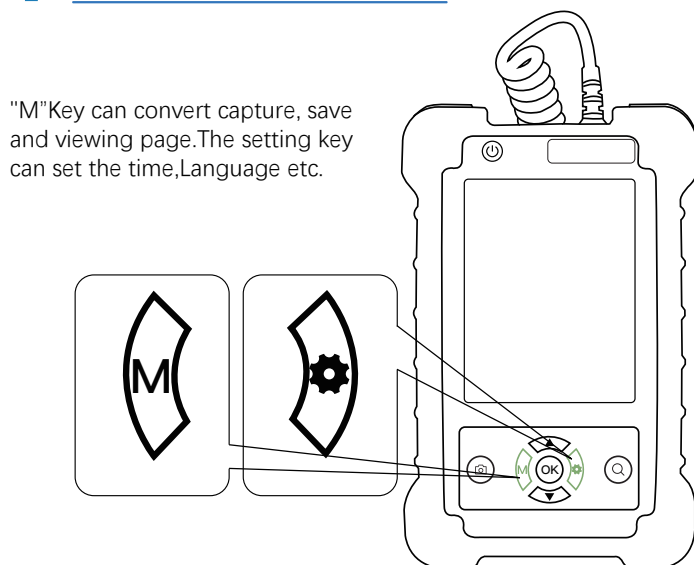


3 Record, zoom in and out



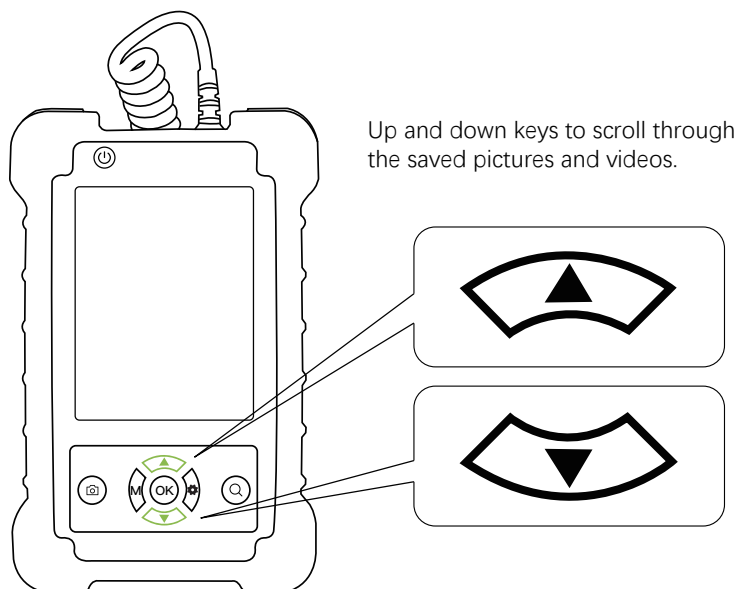
Press the "📷" button to do the real time recording and record measurement information, It supports data return, easy to check and statistics. The "Q" key can be switched between 200X and 400X magnifications, It is clear to view cleanliness of the fiber end face.

4 Modes and settings



"M" Key can convert capture, save and viewing page. The setting key can set the time, Language etc.

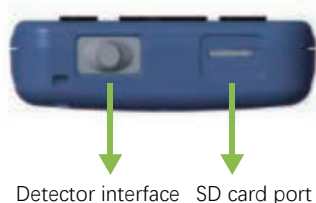
5 Up and down key switch



Up and down keys to scroll through the saved pictures and videos.

6 Product characteristics and use

Upper interface



Detector interface SD card port

Lower interface



USB port

➤ USB interface can be read and charged

Detect fiber end face

① Screw a connector on the fiber inspection probe to match the port you wanna test. To install a new connector, first to unscrew the installed connector, and then screw on the new connector.

② Press the power button for 4 seconds to boot.

③ Turn the focus wheel until the picture on the monitor is clear.

7 Product specification

fiber inspection probe		Magnification	400X
		Resolution (μm)	surpass 1.0
		Visual range (μm)	0.316*0.285
		Size (μm)	235(W)*95(D)*30(H)
		Image sensor	1/3 480
		Storage temperature	-18°C~35°C
		Weight(kg)	0.11
3.5 -inch LCD display	Image	Image size (mm)	22
		Pixel	307200
	Video	Frequency	25FPS
		LCD screen	960*240 LCD
		Video output mode	NTSC/PAL
		Playback mode	AVI
	Hard drive format	Compatible memory card	TF
		Capacity	8GB
		USB	1.1/2.0
		Hard drive format	FAT32
	Power supply	AC adapter	DC 5V/2A
		Internal battery	4000mAh lithium battery
		Media Player	≥7
Weight and size (kg)/W*D*H(mm)		0.085/78*22*56	

8 Products features

- 400 times magnification, stains are clearly visible.
- Support SC/FC/ST/LC/SC female/LC female.
- 4000mAH large capacity lithium battery, 20 hours standby.
- 3.5-inch high-definition LCD display.
- 1/3 inch sensor, 300,000 effective pixels.
- Support TF card, record and replay video, convenient for testing data archiving.
- Small size, can be held with one hand, convenient and fast.
- Rotatable metal bracket, stable and convenient.

➤ Fiber inspection probe list

- Fiber inspection probe
- Standard connector: LC/PC; SC/PC; 1.25mm connector; 2.5mm connector
- SD card and card reader
- USB data cable

⚠ Safety warning

Warning!

To avoid eyes damage, please do not look directly at the probe during use, unless you understand and take relevant measures.

To avoid possible fire, electric shock, personal injury or damage to the optical fiber detection probe,

Please :

- Do not disassemble the machine, there are no user-usable parts inside the machine.
- Use the charger dedicated for the machine to charge the battery.

Charge

Charge it for about 4 hours before the first use. Use the USB data cable to charge the machine. After the fully charged, it can be used continuously for 7 hours.

Contact us

NANJING ORIENTEK OPTICAL COMMUNICATION LTD

TEL: +86 17312230635

Mail: info@orientekot.com

Add: Jianshan Industry Park, Liuhe District, Nanjing, Jiangsu, China

Web: www.orientekot.com