

TR600 All-fiber OTDR

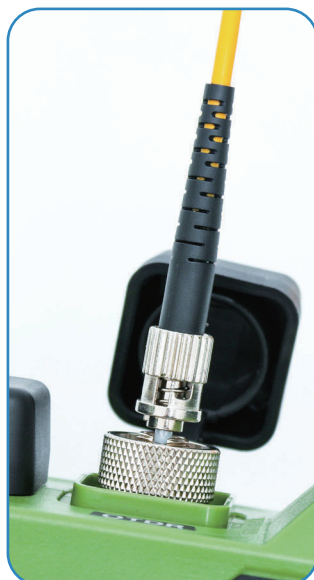


- Applicable fiber: SM MM PON
- <1.8m extra-short event dead zone
- Up to 32/30dB High Dynamic Range
- Distance Range: 4,8,16,32,64,128,256km
- 640x480, 5.7 inch TFT-LCD (touch screen)
- 3 year Warranty
- USB interfaces, supporting USB stick and printer and direct cable download to PC via ActiveSync
- Memory capacity >800 traces
- Built-in lithium battery with high capacity for over 8 hours of operating life
- Display: Color LCD

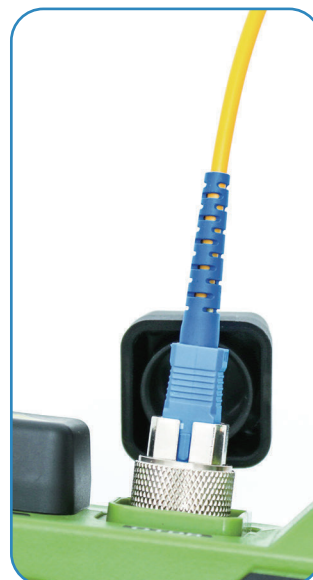
Support four interface fiber types



FC



ST (Optional)



SC (Optional)



LC (Optional)

GUI interface

GUI interface design, operation is more simple, more intuitive reflection of the measurement results.



Color touch screen

Touch and key make operation more varied. To satisfy different people's habits and improve their work efficiency.

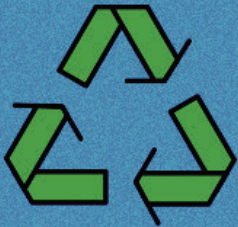




330times



8400mAh



recycled



Model code:
Code du modele

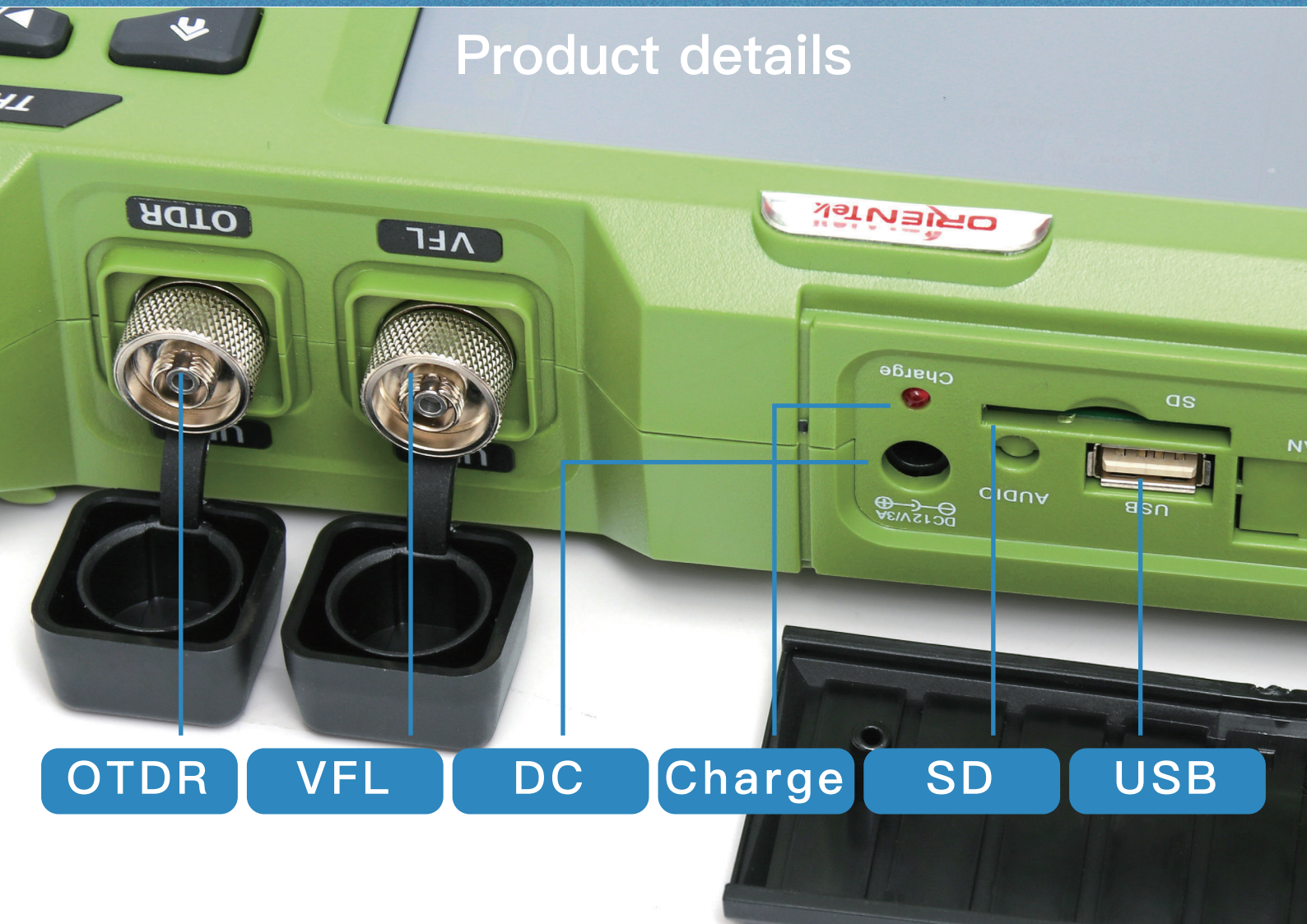
Serial number:
Numero de serie

Production date:
Date de production



CAUTION!
INVISIBLE LASER, AVOID EYE EXPOSURE, CLASS 1 LASER
Précaution!
Laser invisible, éviter l'exposition des yeux, produit laser

Product details



OTDR

VFL

DC

Charge

SD

USB

PRODUCT FEATURES



Shock resistant



Water resistant



Drop resistant



Dust resistant

PRODUCT SPECIFICATION:

Model	TR600-M	TR600-S	TR600-P	TR600-MS	SS24CF
Wavelength(nm)	850/1300	1310/1550	1310/1550/1625	850/1300+1310/1550	1310/1550SMF+1625SMF
Dynamic range(dB)	21/23	32/30	32/30/28	21/23+32/30	38/36/34
Build-in VFL	Y		N		
Applicable fiber	SM(ITU-T G.652)				
Distance range(km)	0.1,0.5,1,2,5,10,20,30,50,100,200,240				
Pulse width(ns)	5,20,40,80,160,320,640,1280,2560,5120,10240,20480				
Event dead zone(dB)	1.8				
Attenuation dead zone(m)	3				
Optical connector	FC/UPC (SC/LC/ST can be selected)				
Laser class	Class 1m				
Memory of trances	10,000pieces				

CONFIGURATION LIST:

- Carrying bag X1
- Strap X1
- Power cable X1
- Adapter X1
- SD card X1
- Card reader X1
- Certificate X1
- Electronic Manual X1
- Quick Guide X1
- Calibration Certificate X1
- Inspection Certificate X1



CONTACT US:

NANJING ORIENTEK OPTICAL COMMUNICATION LTD

HEAD OFFICE:

Add: Jianshan Industry Park, Liuhe District, Nanjing, Jiangsu, China

Web: www.orientekot.com

Mail: info@orientekot.com

TEL: +86 17312230635

Export Control Regulations

The products and/or technical information presented in this publication may be subject to the application of the Foreign Exchange and Foreign Trade Act and other related laws and regulations in China.

In addition, the Export Administration Regulations (EAR) of the United States may be applicable.

In cases where exporting or reexporting the products and/or technical information presented in this publication, customers are requested to follow the necessary procedures at their own responsibility and cost. Please contact the Ministry of Economy, Trade and Industry of China or the Department of Commerce of the United States for details about procedures.