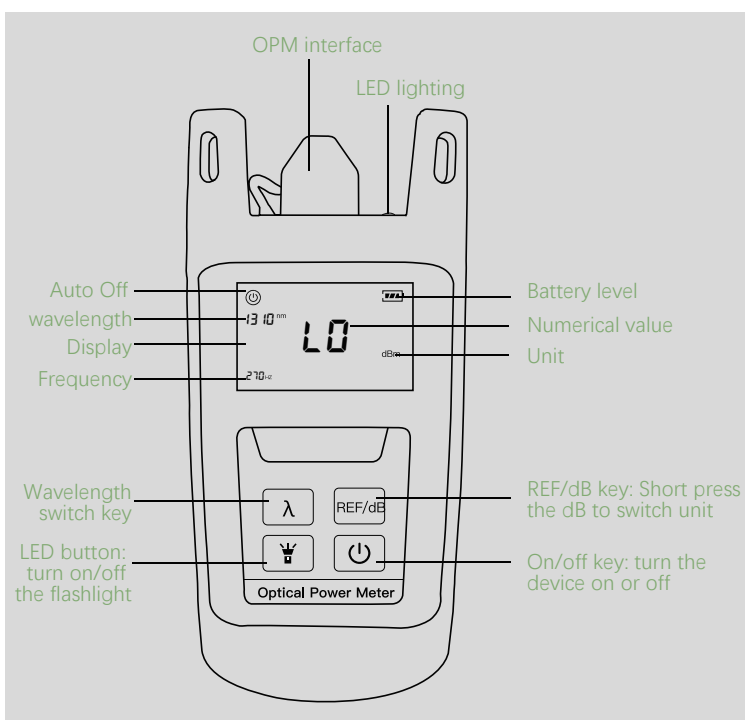


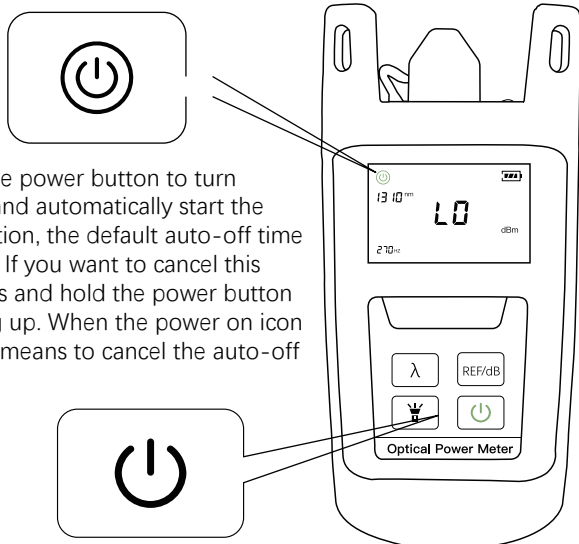
TPM-25m Mini Optical Power Meter User Manual

Products introduction

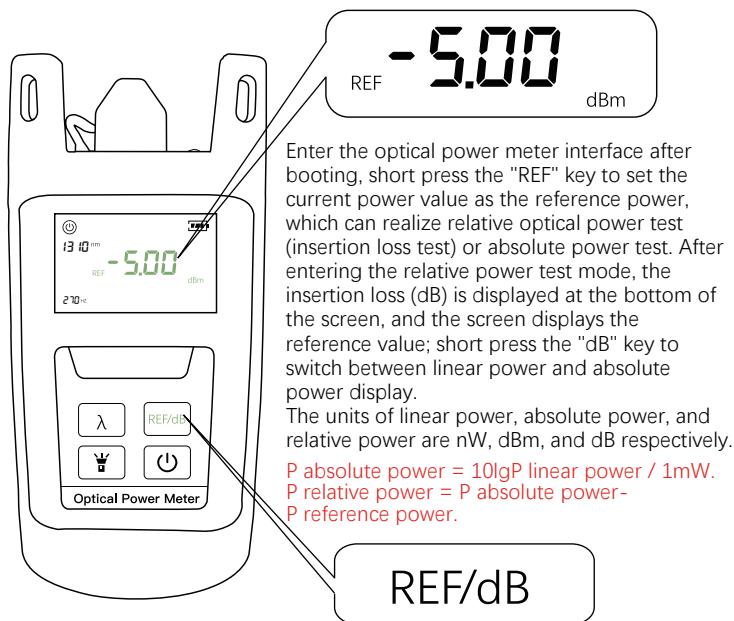
TPM-25m optical power meter is widely used in the construction, maintenance, inspection and acceptance of optical fiber communication network projects. The combination of fiber optic power meter & light source, check continuity, and help evaluate the transmission quality of optical fiber links. Smart appearance, sustainable backlit display, and friendly operation interface make you feel good about it. Provides 7 wavelengths detection, with automatic wavelength memory function. The ultra-wide optical power test range, precise test accuracy and new user self-calibration function will make your work even better. Universal interface design, support FC/SC/ST and other interfaces, without complicated conversion. In addition, the LED lighting function has been added to the product basis to allow it to be carried out in a dark environment, further improvin.



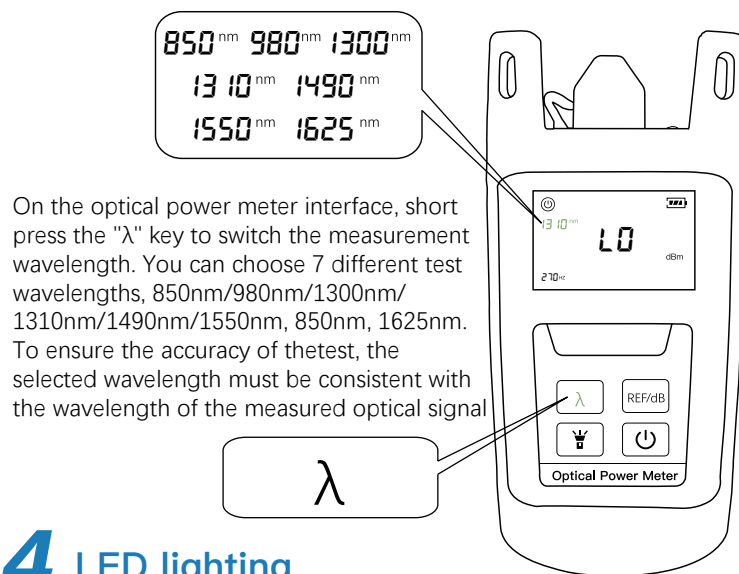
1 Power on/Auto power off



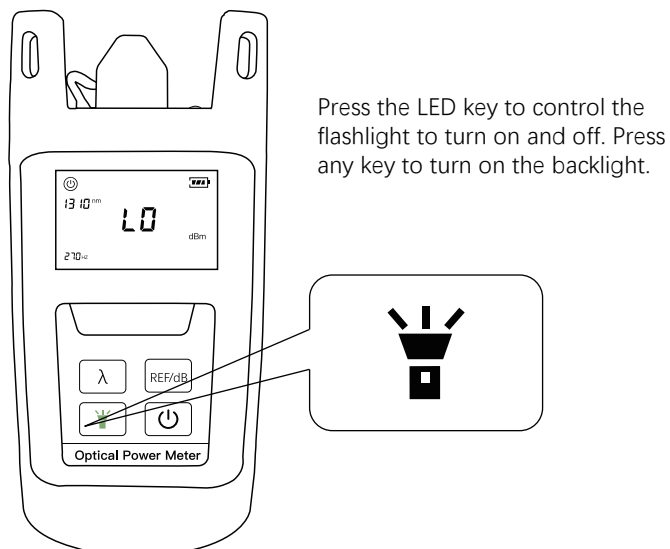
2 Optical power reference value setting



3 Optical power wavelength switching



4 LED lighting



5 Calibration function description

Press the LED+REF/dB keys at the same time to enter the calibration mode. Cal is displayed at the bottom of the screen. The following operations are only valid in the calibration mode. λ key for downward adjustment, REF/dB key for upward adjustment. After adjustment, press LED to save.

Key	Function
REF/dB	Increase by 0.1dB
λ	Decrease by 0.1dB
	Save
	Shut down

6 Common fault solutions

Fault prompt	Possible Causes	Solutions
LCD display is weak	Battery low	Replace battery
Unable to boot display	Battery low or other reasons	Reboot or replace battery
Optical power value is abnormal	Connector failure/dirty	Reconnect the connector or clean the sensor

7 Products features

- 2.5mm universal connector, suitable for FC/SC/ST connectors
- ± 0.2 dB accuracy
- Wavelength range 850nm~1625nm
- Measuring range: -70~+10dBm/ -50~+26 dBm
- Manual calibration
- Waterproof keys suitable for various outdoor environments
- Silicone case protection design
- Equipped with LED lights to facilitate work in dark environments



SC



FC



ST



LC(Optional)

8 Product parameter

Wavelength (nm)	850/980/1300/1310/1490/1550/1625nm
Measuring range (dBm)	-70 ~ +10dBm
Connectors	2.5mm universal interface
Power Supply	Alkaline battery(3 AA 1.5V battery)
Resolution (dB)	0.01
Working Temperature	-10~+60(°C)
Storage Temperature	-25~+70(°C)
Dimensions/Weight	130x65x35mm / 180g

➤ Use environment

- Operating environment altitude: areas below 2000m above sea level

9 Tips

- ⚠ Please read all instructions and warnings before using this product. Irregular use will cause. It will damage the product or personal safety.

- 1) Do not store this product in high temperature, strong light and strong magnetic fields, and do not place it in other harsh environments such as fire sources.
- 2) Improper use of the product may easily cause the product damage or may endanger personal and property safety.
- 3) If consumers violate the product manual and improperly use it, the personal and property damage caused by it will be borne by yourself, our company will not bear any legal responsibility.
- 4) Non-professionals are strictly prohibited from disassembling this product.
- 5) Avoid using electrical appliances or loads that exceed the output current of this product (the circuit will be protected and there will be no output).
- 6) Avoid strong physical effects, including knocking, throwing, trampling, squeezing, etc.

➤ Standard configuration

- Packing carton, optical power meter , certificate of conformity, instruction manual.

Contact us

NANJING ORIENTEK OPTICAL COMMUNICATION LTD

TEL: +86 17312230635

Mail: info@orientekot.com

Add: Jianshan Industry Park, Liuhe District, Nanjing, Jiangsu, China

Web: www.orientekot.com